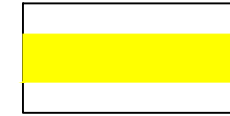

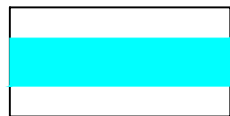
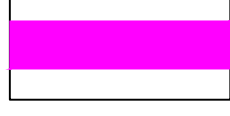
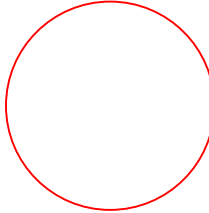
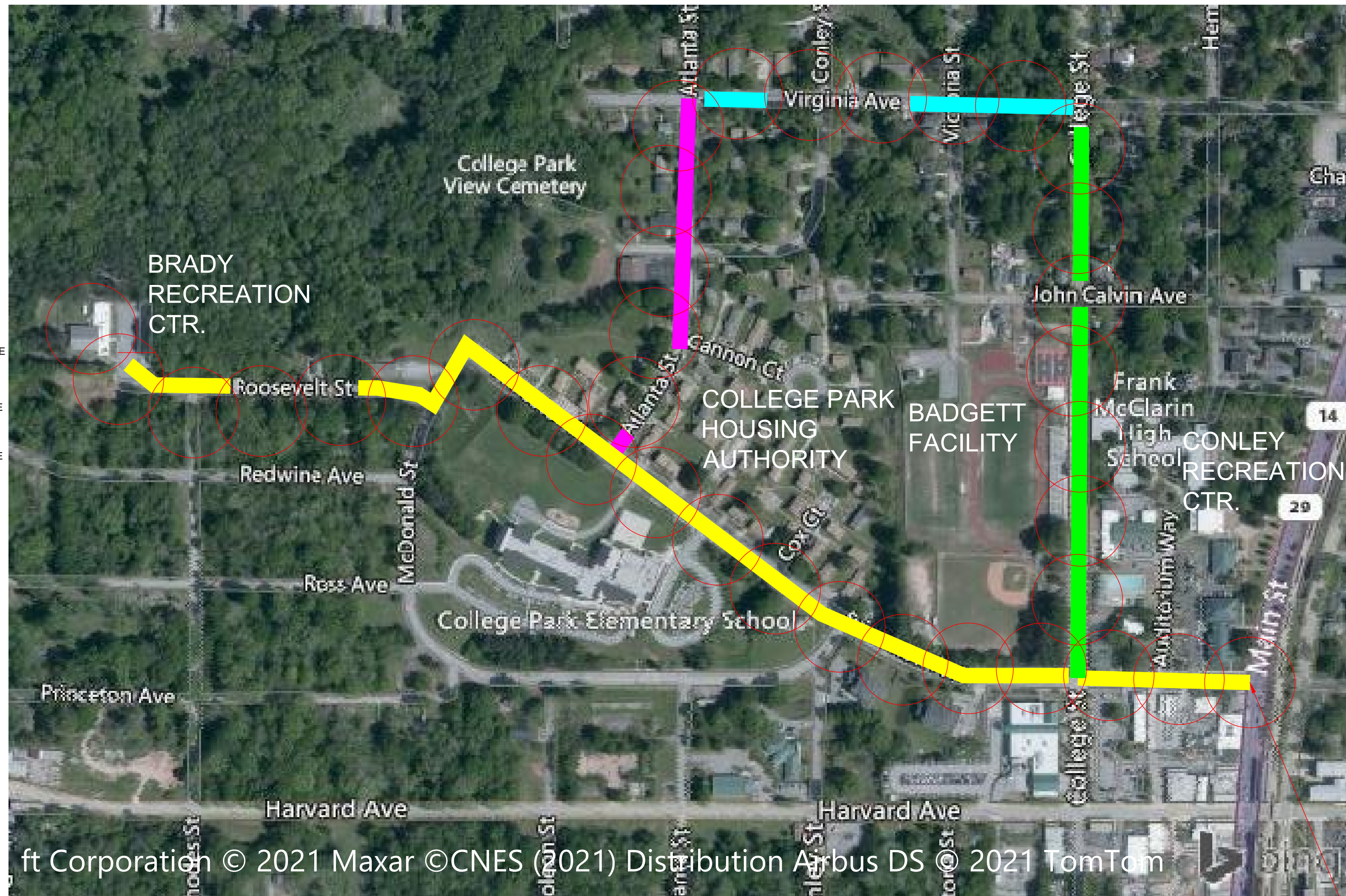


LEGEND

-  18 ESTIMATED ACCESS POINTS TO PROVIDE WIFI COVERAGE AS SHOWN
-  7 ESTIMATED ACCESS POINTS TO PROVIDE WIFI COVERAGE AS SHOWN
-  5 ESTIMATED ACCESS POINTS TO PROVIDE WIFI COVERAGE AS SHOWN
-  5 ESTIMATED ACCESS POINTS TO PROVIDE WIFI COVERAGE AS SHOWN
-  ACCESS POINTS TO PROVIDE WIFI COVERAGE AS SHOWN



ft Corporation © 2021 Maxar ©CNES (2021) Distribution Airbus DS © 2021 TomTom

PROJECT DESIGN SCOPE OVERVIEW

Thirty-seven (37) Potential access points are estimated to provide WiFi coverages shown on the Map

- AP counts may change as a result of final available mounting locations
- Mounting is proposed to existing light poles:
- Assumes power is available at the mounting locations (110v 24/7 uninterrupted power)
- Assumes ability to get fiber to the installation locations through existing or new conduit
- Climate controlled data closet available to mount WiFi core equipment and small rack:
- Fiber needs to pull back to the center location

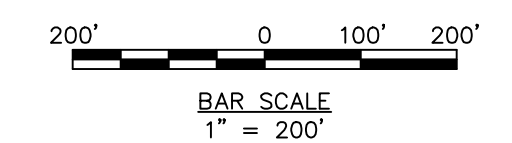
CP AP-9
MAIN STREET
PROJECT ACCESS POINT
/CONNECTION POINT

General Notes



Public Infrastructure Broadband to Low Moderate-Income Residents and Areas

DESIGN SCOPE
AERIAL MAP



No.	Revision/Issue	Date

Firm Name and Address



METROCORP DEVELOPMENT ENTERPRISES, INC.
3707 MAIN STREET, SUITE No. 102
COLLEGE PARK, GA. 30337

Project Name and Address

PARKS AND CULTURAL AFFAIRS FACILITY BROADBAND IMPROVEMENTS
3667 MAIN STREET
COLLEGE PARK, GA. 30337

Project	2021CP	Sheet	s1.0
Date	10/26/2021		
Scale	As Noted		