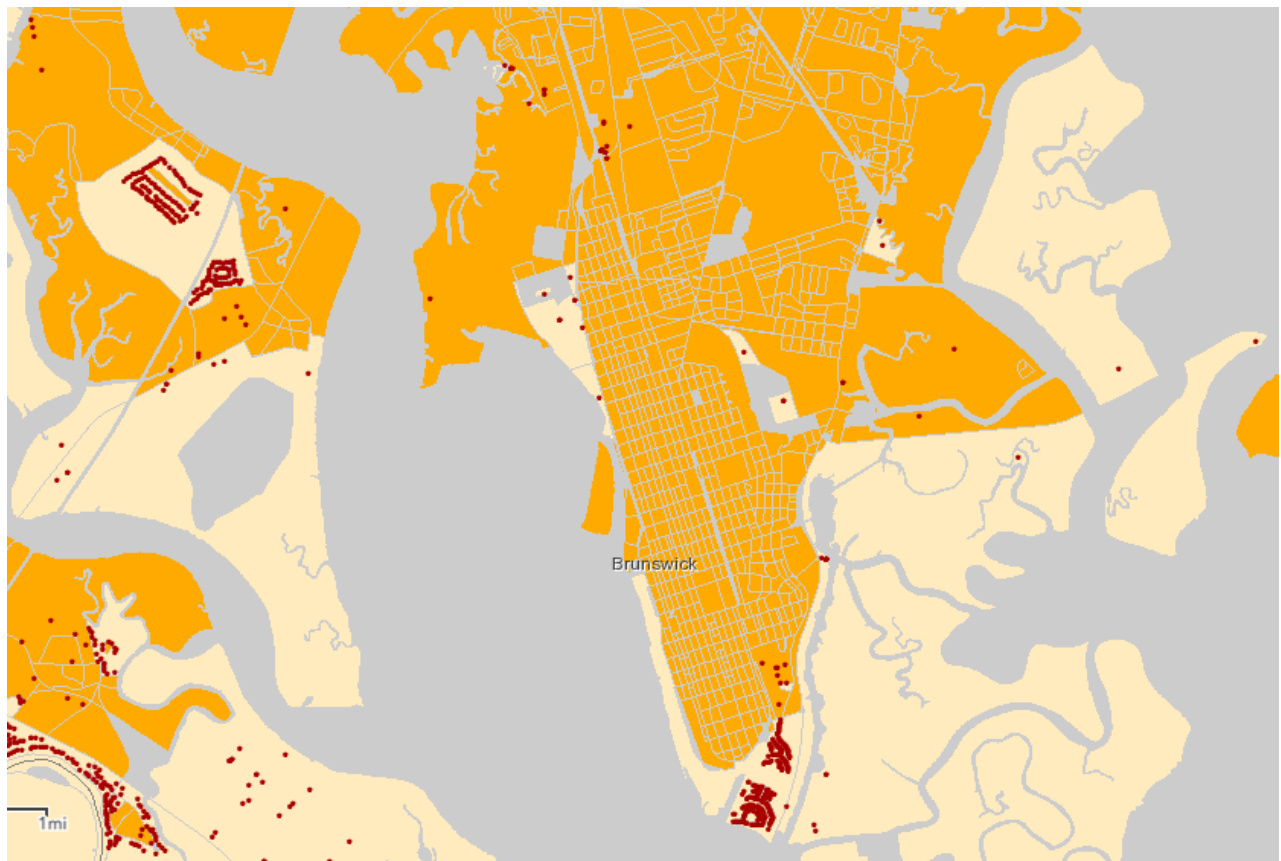


The Mapping Details & Full Picture:



The City of Brunswick appears to be a fully "served" city under the current FCC broadband definition and the available Form 477 data as shown below. However, this does not show the full story of a community that is truly underserved. Please reference the following additional maps.

The full story is shown using the NTIA Broadband Indicators of Need map which shows that, based on census data, approximately 35% of the households in Brunswick do not have access to any internet service in their homes. While service may be available, the pricing of the service, combined with the high poverty rate in Brunswick leads to a significant percentage of the households in the city being underserved. The carriers have effectively redlined the entire City of Brunswick with minimal service at high monthly rates which they use to subsidize building Fiber to the Home networks just outside the city in more affluent areas of Glynn County. For the residents of Brunswick, it isn't a question of whether the service is available. The question is whether it is attainable and affordable. We intend to provide a high bandwidth residential service that is both attainable, with service available for all, and affordable, with a fixed rate of \$18 for life for those most in need

